

ACTIVA™ BioACTIVE

SMART™ Biomaterials for Today's Caries Management

CEMENT
Universal¹ BioACTIVE

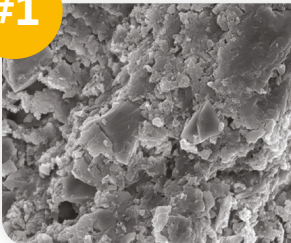
- Lute + bond
- Releases and recharges calcium, fluoride, and phosphate
- Resin/RMGI hybrid
- Dual cure

The Premier SMART™ Universal¹ Cement

- ✓ Zirconia
- ✓ e.max®
- ✓ Metal
- & more



#1



Bioactive Protection*

Your #1 defense against the leading cause of crown failures—secondary caries caused by microleakage

*ACTIVA™ BioACTIVE physically seals the margin of the material and tooth interface through apatite crystal formation, subsequently protecting against microleakage, the leading cause of secondary caries and recurrent decay.

¹Use with all zirconia, ceramic, stainless steel, and composite-based indirect restorations except for porcelain veneers.

Powered by patented SMART™ technologies


WetBond™
Moisture-friendly chemistry


ION-X™
Ionic matrix supports ion release and recharge, plus bioactive protection


MODULUS™
Elastomeric monomer imparts strength and resilience

The Next-gen BioACTIVE Lute + Bond

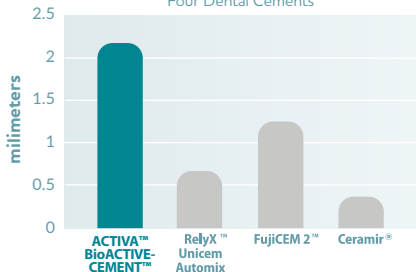
The Best of RMGI and Resin Cements in One

Images courtesy of Dr. G. Franklin Shull



Deflection at Break

Four Dental Cements



ACTIVA = Bioactive cement; RelyX Unicem Automix = Self-adhesive cement; FujiCEM 2 = RMGI; Ceramir = Calcium aluminate-GI
Disclaimer: RelyX™ is a trademark of 3M; FujiCEM 2™ is a trademark of GC; Ceramir® is a registered trademark of Directa AB
Source: University testing¹⁴ (References: www.pulpdent.com/education-articles)

RESISTS FRACTURE

Thanks to MODULUS™ elastomeric flexion technology, ACTIVA withstands intraoral forces, flexing rather than cracking.

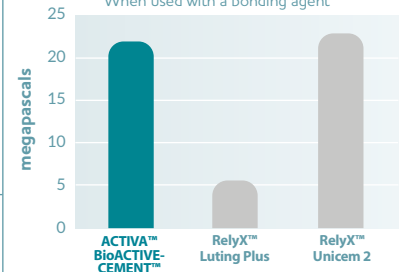
STRONG & UNIVERSAL¹

ACTIVA BioACTIVE-CEMENT can be bonded like a resin cement and has ionic benefits like an RMGI cement.

¹Use with all zirconia, ceramic, stainless steel and compositebased indirect restorations except for porcelain veneers.

Shear Bond Strength to Dentin

When used with a bonding agent*



ACTIVA = Bioactive cement; RelyX Luting Plus = RMGI; RelyX Unicem 2 = Self-adhesive cement
*Internal testing with 3M™ Scotchbond™ Universal Plus
Disclaimer: RelyX™, Scotchbond™, and 3M™ are trademarks of 3M

Ordering Information

Available from your preferred dental dealer

VC1A2	Single pack: 7 gm / 5 mL syringe + 20 automix tips A2 Opaque Shade
VC2A2	Value pack: 14 gm (2 x 7 gm / 5 mL syringes) syringes + 40 automix tips, A2 Opaque Shade
A20	Automix syringe tips, pkg. 20
A50	Automix syringe tips, pkg. 50

VC1T	Single pack: 7 gm / 5 mL syringe + 20 automix tips Translucent Shade
VC2T	Value pack: 14 gm (2 x 7 gm / 5 mL syringes) syringes + 40 automix tips, Translucent Shade
A20N1	Automix tips, clear, with bendable 20 ga. metal cannula, pkg. of 20
A50N1	Automix tips, clear, with bendable 20 ga. metal cannula, pkg. of 50

Ask about our new user special!

